

## Starting the database engine as a service for MET/TRACK® Software using MET/BASE® Version 7.X

### Application Note

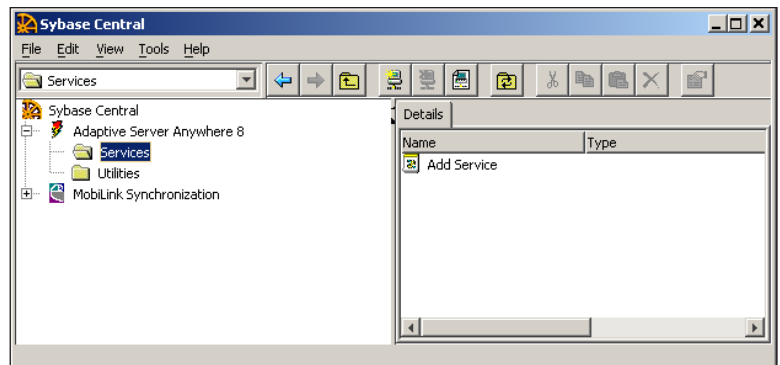
The Data Engine must be running at all times when any of the MET/CAL or MET/TRACK applications are being used. In a client/server environment, this means that someone has to be logged in to the server at all times, just to keep the engine running. This, of course, may not be practical. When running MET/CAL software in a client/server environment, you may prefer to have the data engine running as a Service in Windows, rather than starting it as an application from an icon in the Startup Group or the Fluke Metrology Software program group.

On the server (or standalone computer), shut down the SQL database engine by double-clicking on the Data Engine SQL Icon on the right of the task bar and selecting Shutdown.

Go to **Start | Programs | Startup | Calibration Data Engine**. Right click to select properties. Highlight and Copy everything on the target line after `..../dbsrv8.exe`. In this case `c:\metdata\mtrack.db -n JohnCo -gl dba -ti 0 -tl 14400 -x tcpip`. In this case "JohnCo" is the database name. If a name was not specified during installation, the name would be "MetTrack". Close the properties window.

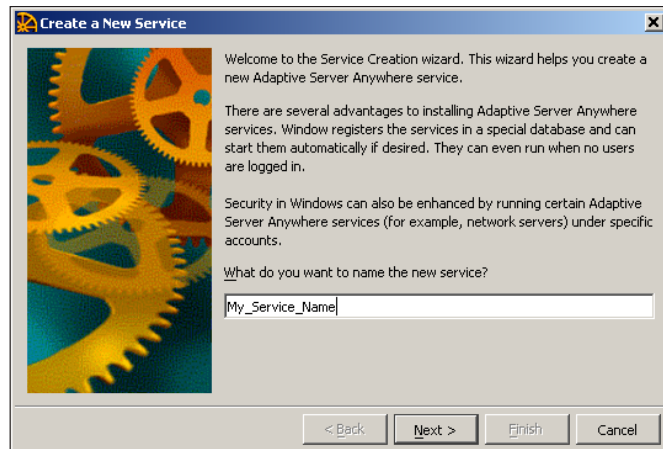
Next, select the "Sybase SQL Service Manager". This can be set up from Sybase Central. Browse to this folder by clicking **Start | Programs | Sybase SQL Anywhere 8 | Sybase Central**.

#### You will see the following window:

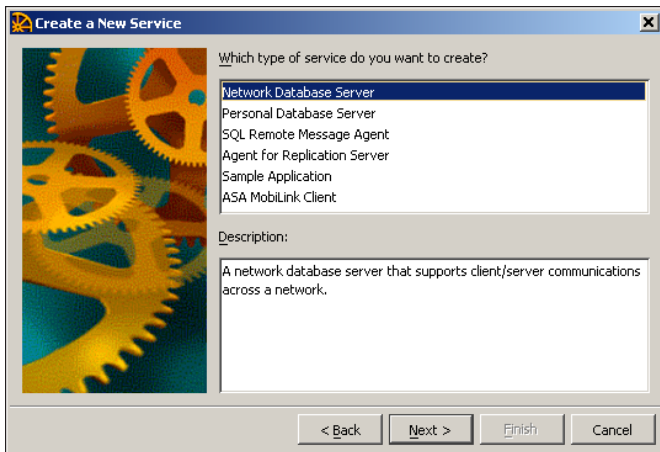


Open the folder called **Services** in the left panel. Double-click **Add Service**. At this point, you may see a message regarding the SQL help files. Just ignore this and continue.

#### You will then see the following dialog box.

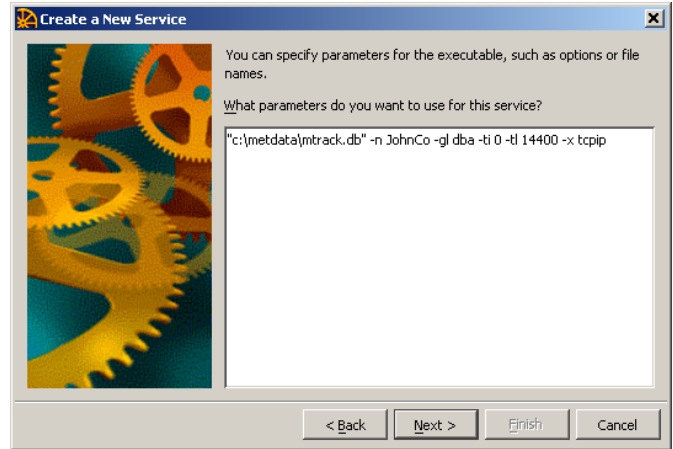


Enter a new service name: For example, "My\_service\_name". **Note:** You cannot use spaces in this service name. Select "Next>" to continue.

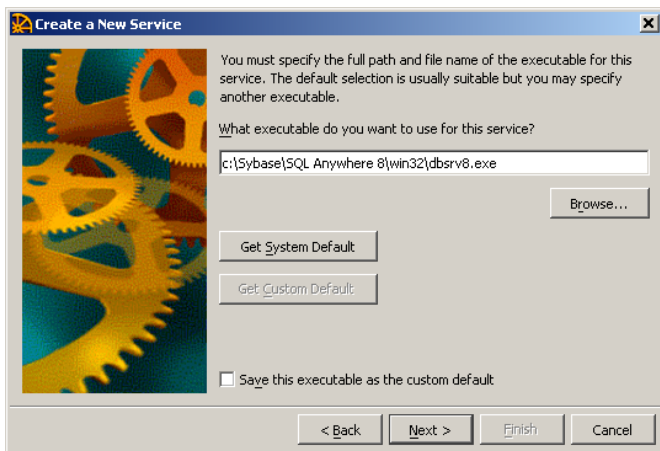


Select **Network Database Server**.

Select "Next>"

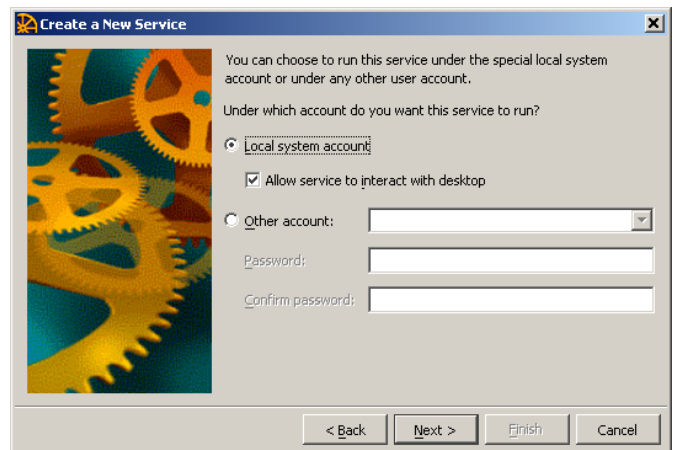


Select "Next>"



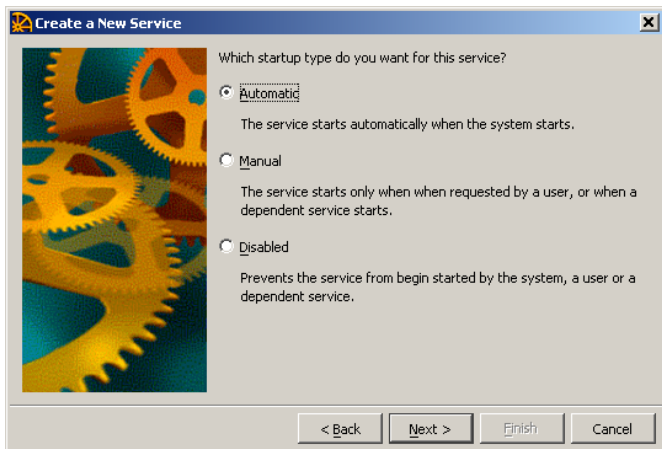
Enter the path to the Sybase SQL Anywhere 8 database engine. Shown, is a typical line for a stand alone Client/Server setup.

Select "Next>"

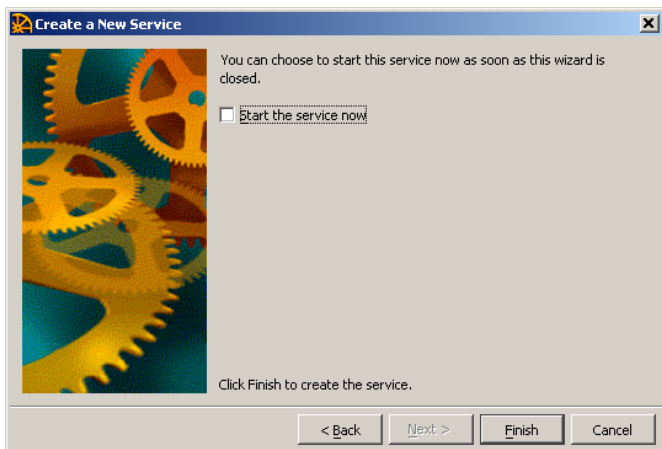


Select "Next>"

Setup the startup type to be **Automatic**.



Select "Next>"



Select "Finish"

To avoid a sharing violation, remove Calibration Data Engine from the startup properties. **Start | Programs | Startup| Calibration Data Engine.** Right click Calibration data engine and select Remove.

**To change the parameters for a Sybase SQL service:**

1. Ensure that the server you wish to change is selected in the Server Name list box of the Sybase SQL Service Manager main window.
2. Click the **Edit** button to display the Edit Sybase SQL Server Configuration dialog box.
3. Alter the parameters as needed. Enter the appropriate database server parameters, including database to run, in the Parameters box.
4. When you have altered the parameters as you wish, click the **OK** button to accept and save the changes.

The changes to the service configuration do not take effect immediately. They take effect next time the service is started. The Startup option will be applied next time the computer starts NT.

**Fluke.** *Keeping your world up and running.*®

**Fluke Corporation**  
PO Box 9090, Everett, WA 98206 U.S.A.

**Fluke Europe B.V.**  
PO Box 1186, 5602 BD  
Eindhoven, The Netherlands

**For more information call:**  
In the U.S.A. (800) 443-5853 or  
Fax (425) 446-5116  
In Europe/M-East/Africa +31 (0) 40 2675 200 or  
Fax +31 (0) 40 2675 222  
In Canada (800)-36-FLUKE or  
Fax (905) 890-6866  
From other countries +1 (425) 446-5500 or  
Fax +1 (425) 446-5116  
Web access: <http://www.fluke.com>

©2008 Fluke Corporation.  
Specifications subject to change without notice.  
Printed in U.S.A. 12/2008 3359981 A-EN-N Rev A  
Pub\_ID: 11464-eng Rev 01

**Modification of this document is not permitted without written permission from Fluke Corporation.**